

# **Tentative Syllabus**

## **Birmingham-Southern College**

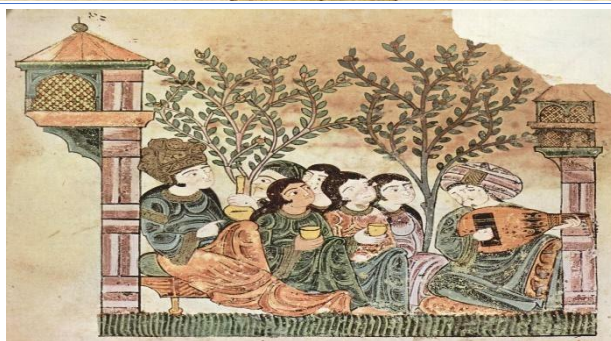
**E-Term 2022**

**AN299/ARB 299: Arabic Musical Cultures**

**MTW: 9:00 a.m. -12:00 p.m.**

**12:30 p.m.-1:30 p.m. for Singing workshops HC 224**

**(Black Studies and GWS Designation)**



### **Office Hours:**

Dr. Lamia Benyoussef and Dr. Daniel Coyle

Monday, Tuesday, Wednesday after class from 2:00 p.m.-3:00 pm. or by appointment.  
Office of Dr. Benyoussef: 211 HB. Tel 226 7830  
Office of Dr. Coyle 31 HB. Tel 226 7839

**Course Description:** This project is an investigation into the various musical traditions of the Arabic-speaking world. We analyze the Arabic musical scales (*maqamat*), the philosophical treatises on music by Al Farabi, Avicenna, and al Ghazali, the social position of singers including considerations of class, gender, sexuality, and race from pre-Islamic times to the present. We also trace the development of various musical genres and instruments through the Arab diaspora in Europe and North America. A special emphasis will be placed on Levantine, Egyptian, North African music and the intersection of religion and secular thought. Students will complete weekly quizzes, contribute to the Moodle forum, give a final presentation, and engage in practical music workshops.

**Learning Outcomes:**

1. Discuss Arabic musical traditions at the intersection of race, religion, and gender.
2. Draw connections between Greek and Arabic philosophies of music.
3. Examine the historical connections between North and West African Arabic music and African American music of the Deep South.
4. Study Arabic musical scales known as *maqamat*.
5. Perform an Arabic song at the end of the e-term.

**Required Readings:**

All readings and posted on Moodle.

- Don M. Randle's "Al Farabi and the Role of Arabic Music Theory in the Latin Middle Ages
- Said Daukeyeva, "The Philosophy of Music by Abu Nasr al Farabi"
- Mirella Casserino, "Interpreting Two Stories of Kitab al Aghanni: A Gender-Based Approach."
- Al Ghazali, *On Music and Singing*, select excerpts.
- Johnny Farraj, *Arabic Musical Maqams: Performance and Theory*, select excerpts.

Other short articles, videos and documentaries posted on Moodle.

**Class Requirements:**

Class Presentation	10%
Moodle Forum Discussion	30%
Quizzes (3)	30%
Music Performance or Presentation	30%

**1. Class presentation:**

It must be on the assigned readings of the day. Each student will present during this e-term a presentation on the course texts. Students will prepare a handout to distribute that includes an outline of your text, a selection of your favorite passages, and 2-3 discussion questions to encourage us to draw

connections between your passage and the other readings assigned for that day. Your presentation should last 15-20 minutes. Do not go over time.

## *2. Moodle Forum Discussion:*

Every week each student must post a blog-style note on Moodle by midnight on the day preceding the class. Choose a passage from the readings you find problematic or thought provoking and explore it. Your comment (at least 2 paragraphs) should engage closely with at least one of the readings, videos, or podcasts assigned for the week. Your comment may formulate a question, point out problems in a scholarly argument, or note the implications of a text for themes we have been exploring in class.

3. There will be an online quiz each Monday night on the content of the readings assigned for the day.

In the case of a missed quiz students may substitute a *cumulative - comprehensive* timed online quiz at the end of the term for one missed quiz (NOTE: this benefaction may only be *invoked once*).

4. All students are required to participate in the rehearsal and performance at the end of the semester of one of the three Arabic songs chosen for the whole class: “Bent al Shalabiyyah” (The Levant), “Al Helwa Di” (Egypt), and “Leklam Lemrassah”/ ”Sidi Mansour” (North Africa). Students will participate at the E-Term Show Case on January 27. More details will follow from the office of Dana Bekurs.

**Deadlines:** Any assignment turned in after the deadline will be reduced by 20 points per day.

**Attendance policy:** You are allowed only 1 absence (1 class = 4 hours). **If you have a 2 or more unexcused absence(s)**, you lose for each absence 10% of your final cumulative grade points. You must be in class both physically and mentally. Only use laptops for taking notes. Chatting on the instant messenger is not allowed in this class. You are strongly encouraged to participate in class discussion. Please be on time for class. Don’t interrupt a class by arriving late or leaving early, popping in and out of the room or asking questions irrelevant to the topic we are discussing. Turn cellphones off.

## **Illness and Covid 19-related absences:**

Covid 19-related absences will be treated like any other disease. A medical excuse from your doctor is required no later than 10 days after you miss the first class. After quarantine, students may seek individual support from instructor during office hours. However, they can still attend the class virtually if they feel well enough to do it. They must notify the instructor in advance so that he or she has enough time to set up the virtual synchronous class on TEAMS.

**Incompletes:** for exceptional circumstances like death in the family or illness are granted only to those students who have already turned in and passed 70% of the class requirements. No incompletes shall be granted without proper documentation attesting to the students’ claims of illness or family hardship.

**Tardiness:** is defined as entering the classroom after roll is taken. Each instance of tardiness will be counted as ½ absence. Similarly, leaving class before it has ended will be counted as ½ absence. Students arriving after the roll has been called are responsible for notifying the instructor so they can be marked tardy rather than absent.

**Incompletes:** for exceptional circumstances like death in the family or illness are granted only to those students who have already turned in and passed 70% of the class requirements. No incompletes shall be granted without proper documentation attesting to the students’ claims of illness or family hardship.

**BSC Honor Code:** Students suspected of having violated the BSC Honor Code will be remanded to the Honor Council for a hearing. A student determined by the Council to be in violation of the Honor Code will receive a grade of "F" in SN 220, in addition to whatever other sanctions the Council imposes.

**Collaborating on writing assignments for the essays or having anyone other than the professor read your essays or rewrites, is not allowed and will be considered a violation of the Honor Code.**

**Cell Phones:** Please turn off your cell phone before entering class. Any student whose phone rings during class will be penalized in the class participation grade for that day. **Students may not bring cell phones into class on test days or during the final exam. Any student who forgets to leave the cell phone outside of class will have to give it to the Professor for keeping until the end of the test.**

**Academic Accommodation:** Any other student who feels the need for an accommodation based on the impact of a disability should contact me privately to discuss his/her specific needs. Please contact Counseling & Health Services, 2<sup>nd</sup> floor Norton, to coordinate reasonable accommodations for students with *documented* disabilities. Student Athletes should contact me privately as well.

**Excused Absences and Make up-policy:** You may make up one test/quiz/homework/presentation, only if you have an excused absence. You must make up a test/quiz/homework within a week from its due date even if you have an excused absence. It is the student's responsibility to notify within a week the professor of his/her intent to do the make-up assignment.

**Student Success & Wellness:** BSC Counseling Services offers students of all backgrounds, races, religious beliefs, sexual orientations, gender identities, abilities, ethnicities, and cultures a safe place to discuss and resolve issues that interfere with personal and academic goals. The Counseling Services office recognizes and honors the complex intersectionality of all aspects of a person's identity and presenting concerns. All enrolled BSC students are eligible for counseling at no cost. Students can schedule an appointment by calling 205-226-4717, or in-person on the 2<sup>nd</sup> Floor of Norton Campus Center, in the Counseling & Health Services suite—next door to Student Development.

## Tentative Schedule

Date	Readings	Homework/Assignments due
Jan T 4	General Introduction Don M. Randle's "Al Farabi and the Role of Arabic Music Theory in the Latin Middle Ages	
W 5	Said Daukeyeva, "The Philosophy of Music by Abu Nasr al Farabi"	
M 10	Mirella Casserino, "Interpreting Two Stories of Kitab al Aghanni: A Gender-Based Approach." About Al Isfahani's Book of Songs.	Quiz 1
T 11	Al Ghazali, <i>On Music and Singing</i>	Class Presentation
W 12	Al Jahiz, <i>The Book of Singing Girls</i>	Class Presentation Forum Discussion 1: Due Friday, Jan 15 before midnight.

M 17	No Class: Martin Luther King Jr. Day	
T 18	Sufi Music: From the Wine Song to Nass Al Ghiwan	Class Presentation Quiz 2
W 19	Andalusian Music Article: "Andalusian Nuba" Poetry of Abu Nuwas	Class Presentation Forum Discussion 2: Due Friday, Jan 21 before midnight.
M 24	Francesco Martinelli's "Survivals of Arabic in Blues Texts" Jonathan Curiel's "Muslim Roots: US Blues" (Connections between North African Arabic Music and the Blues)	Class Presentation Quiz 3
T 25	Umm Kulthum: The Voice of Egypt	Class Presentation
W 26	Last Day of Class	Final Musical Presentation
Th 27	E-Term Show Case on Campus 1:00 p.m. - 3:30 p.m.	On Campus Presentation of your Final Musical Presentation
		Forum Discussion 3: Due Friday, Jan 28 before midnight.

