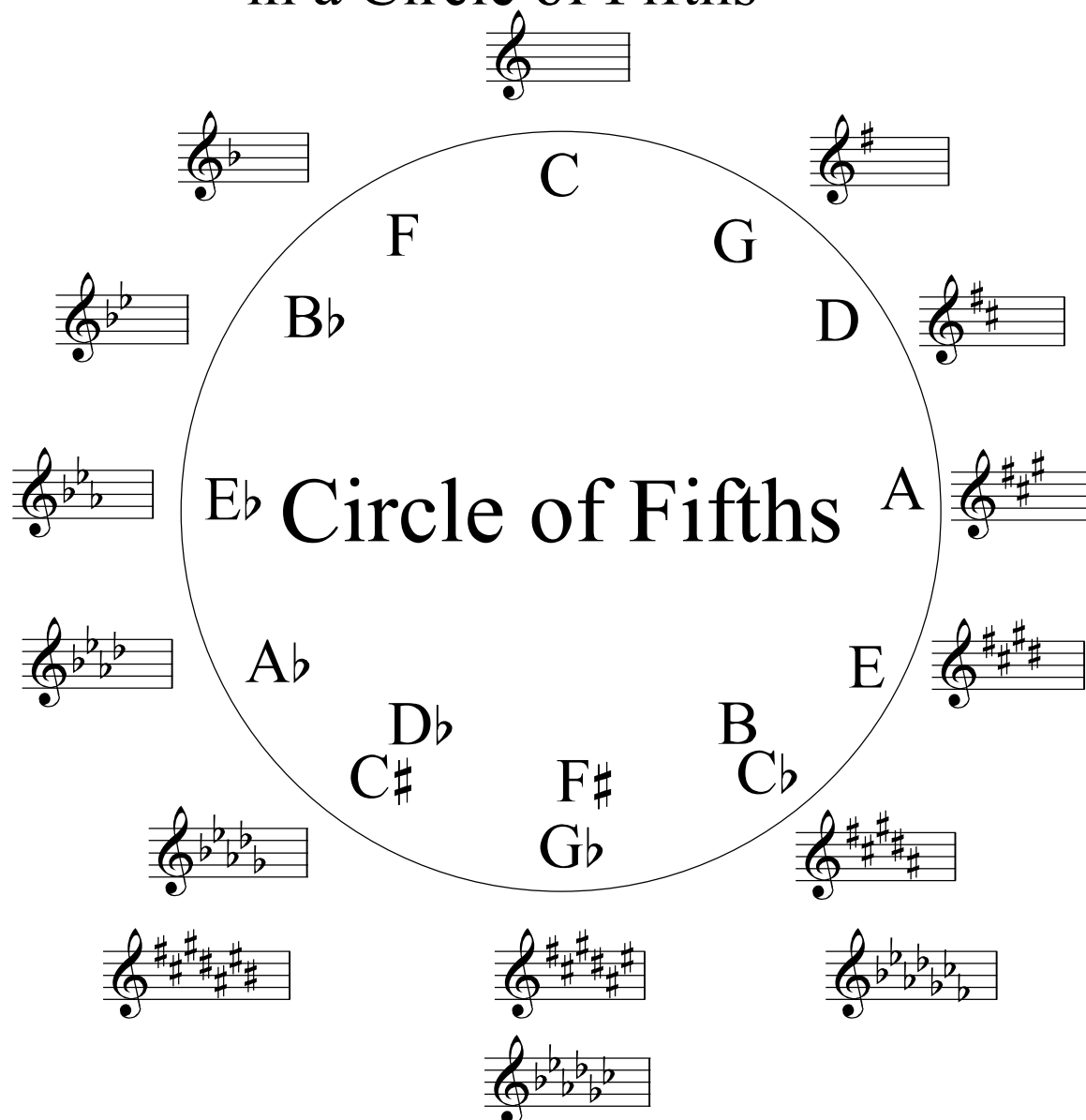


## Write Tonics of Major Keys in a Circle of Fifths



Inside the rim of the circle, write the tonic to match each major key signature.

October 17, 2011

Name \_\_\_\_\_

Class \_\_\_\_\_

# Name Notes I

1



\_\_\_\_\_

2



\_\_\_\_\_

3



\_\_\_\_\_

4



\_\_\_\_\_

5



\_\_\_\_\_

6



\_\_\_\_\_

7



\_\_\_\_\_

8



\_\_\_\_\_

## Name Notes III

Write the name of each note.

1



sixteenth note  
(semiquaver)

2



dotted half note  
(dotted minim)

3



eighth note (quaver)

4



beamed sixteenth notes  
(beamed semiquavers)

5



beamed eighth notes  
(beamed quavers)

6



dotted half note  
(dotted minim)

7



dotted eighth note  
(dotted quaver)

8



beamed eighth notes  
(beamed quavers)

9



dotted quarter note  
(dotted crotchet)

10



dotted eighth note  
(dotted quaver)

11



quarter note (crotchet)

12



beamed sixteenth notes  
(beamed semiquavers)

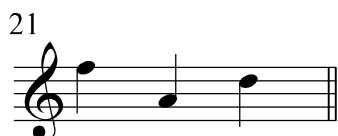
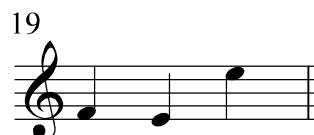
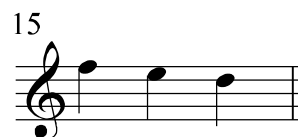
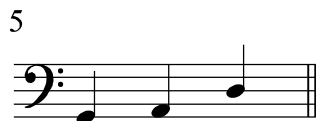
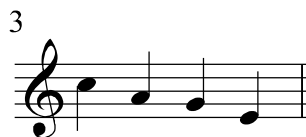
13



sixteenth note  
(semiquaver)

## Spell Words with Treble-Bass Pitches I

Write the words that the pitches spell.



# Spell Words with Treble-Bass Pitches I

2  
25



26



27



28



29



30



31



32



33



34



35



36



37



38



39



40



41



42



43



44



# Parts of a Grand Staff

Diagram illustrating the parts of a Grand Staff:

- Clef Sign (Treble Clef Sign)**: Points to the treble clef on the top staff.
- key signature**: Points to the two sharps (F# and C#) on the top staff.
- time signature**: Points to the 4/4 time signature on the top staff.
- measure line**: Points to the vertical line separating the first and second measures on the top staff.
- SOPRANO ALTO**: Labels for the top two staves.
- TENOR BASS**: Labels for the bottom two staves.
- Clef Sign (Bass Clef Sign)**: Points to the bass clef on the bottom staff.

lines- Every good boy does fine  
spaces- FACE

Lines-Great big dogs fight antelopes  
spaces- All cows eat greens

Diagram illustrating the structure of a Grand Staff with repeat signs:

- 3**: A number indicating the number of staves in the system.
- Repeat signs**: Indicated by double bar lines with dots on the top and bottom staves.
- Arrows**: Point to the repeat signs on the top and bottom staves.

Diagram illustrating a musical staff with a treble clef and a bass clef, showing a sequence of notes across four measures.