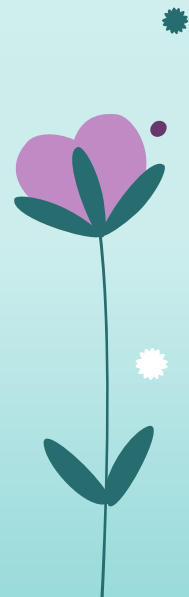
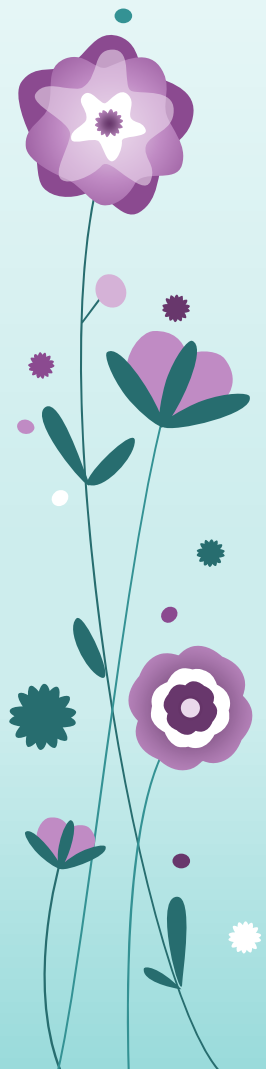


Code for the check-in: 2nd





Coming next...

Discussion forum will be opened this Thursday

Simulation prep will be assigned this Thursday

Check-in next Tuesday





Edit section

CHOICE



Discussion Lead Topic Sign-up

16 of 20 Answered

Due 7 February 2022



FORUM



Courtship, Sexuality and Cohabitation



22SP_S0205A-Sociology of the Family

Courtship, Sexuality and Cohabitation



Discussion lead: Please post your initial question by 11:59pm on Friday. Late submission will receive 25% penalty per day.

Quality of the question- 3 (the question / post should be related to the topic assigned of the week; should be open-ended; should have supporting material quoted from the reading or other sources)

Responding comments- 3 (1 point each, minimum 30 words)

Moderating live discussion session - 4 (the lead shows the readiness to moderate the session, the ability to pull sufficient information from the online forum, the capability to present the issue from various perspectives, the skillset to engage the audience)

Grading rubric for respondents:

minimum 50 words per post, should be a meaningful argument or evidence that is not simply copy and pasted from other's. 1 point for each post, maximum 2 points earned for each topic

[Add a new discussion topic](#)[Grade users](#)

Subject



Message



Post to forum

Cancel

Advanced

Your post was successfully added.



You have 30 mins to edit it if you want to make any changes.

Courtship, Sexuality and Cohabitation

first week test



Search forums



Settings ▾

Display replies in nested form ▾

Move this discussion to ... ▾

Move



first week test

by Yingling Liu - Tuesday, 8 February 2022, 8:59 AM

this is a test

4 words

[Permalink](#)

[Edit](#)

[Delete](#)

[Reply](#)

[Export to portfolio](#)



Re: first week test

by Yingling Liu - Tuesday, 8 February 2022, 8:59 AM

test reply

2 words

[Permalink](#)

[Show parent](#)

[Edit](#)

[Split](#)

[Delete](#)

[Reply](#)

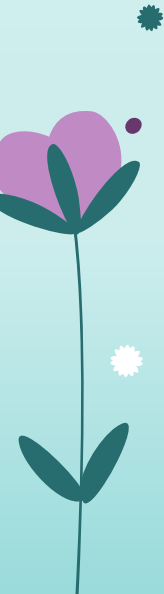
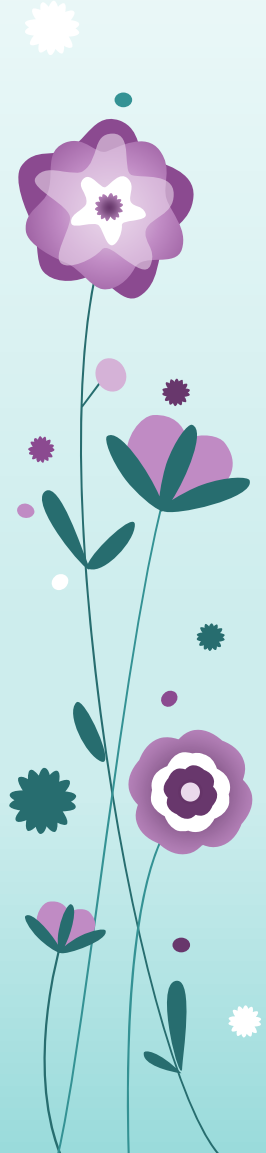
[Export to portfolio](#)

Discussion lead grading

- Discussion lead: Please post your initial question by 11:59pm on Friday. Late submission will receive 25% penalty per day.
- Discussion lead: post questions (1-2 questions each) independently but need to communicate with each other and make sure you don't post the same questions. Discussion lead can cross comment on the replies. The moderation session will be timed separately, with 8-10 minutes each.
- Quality of the question- 3 (the question / post should be related to the topic assigned of the week; should be open-ended; should have supporting material quoted from the reading or other sources)
- Responding comments- 3 (1 point each, minimum 30 words)
- Moderating live discussion session - 4 (the lead shows the readiness to moderate the session, the ability to pull sufficient information from the online forum, the capability to present the issue from various perspectives, the skillset to engage the audience)

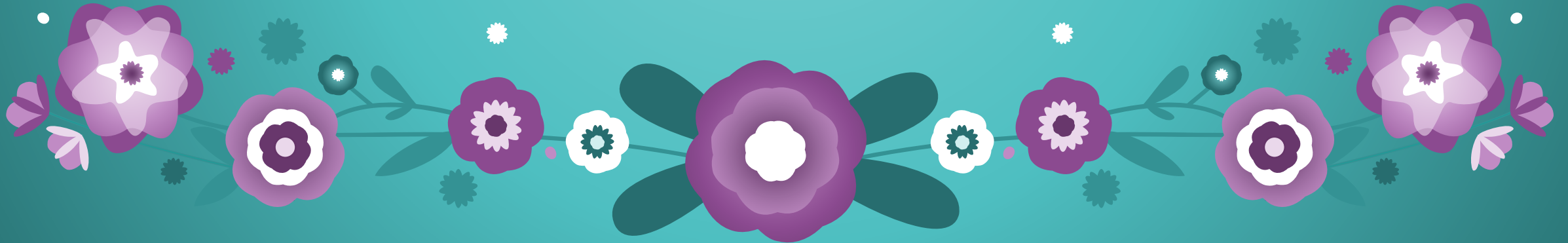
Grading rubric for respondents:

- minimum 50 words per reply, should be a meaningful argument that is not simply copy and pasted from other sources. If you provide an evidence, make sure you explain why this evidence can support your argument.
- 1 point for each post, maximum 2 points earned for each topic.
- Do not start a new thread. Just reply.



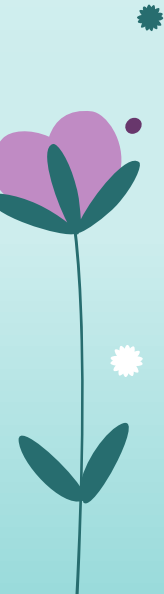
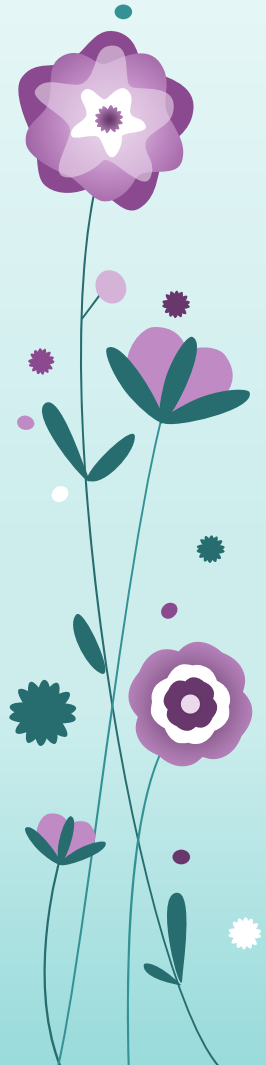
History and Trend of Families in American and the World

02/08



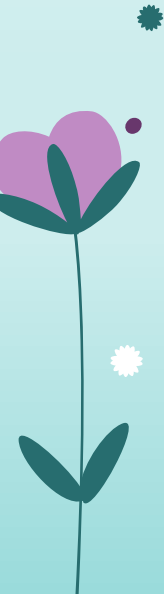
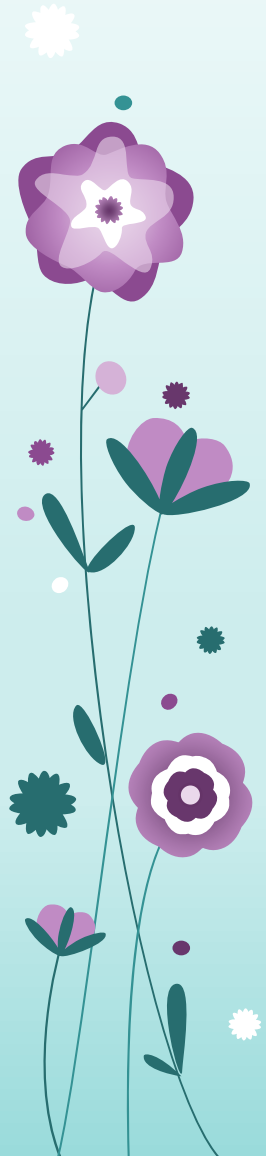
Warm up: changes in family life

- You probably have heard stories from your parents or grandparents about their family lives. Or you probably have known stories about the family lives in the past from movies and books. Were there any differences from the live you are living now? Think about one or two things that related to family lives, write them down, and share them with your neighbors.



Outline

- Family histories in America
- Changes and trend in America
- Families around the world
- International family changes



American Families before 1776

- 
- American Indian families.
 - Families of European colonists.
 - Families of African slaves.

American Indian Families: The Primacy of the Tribes

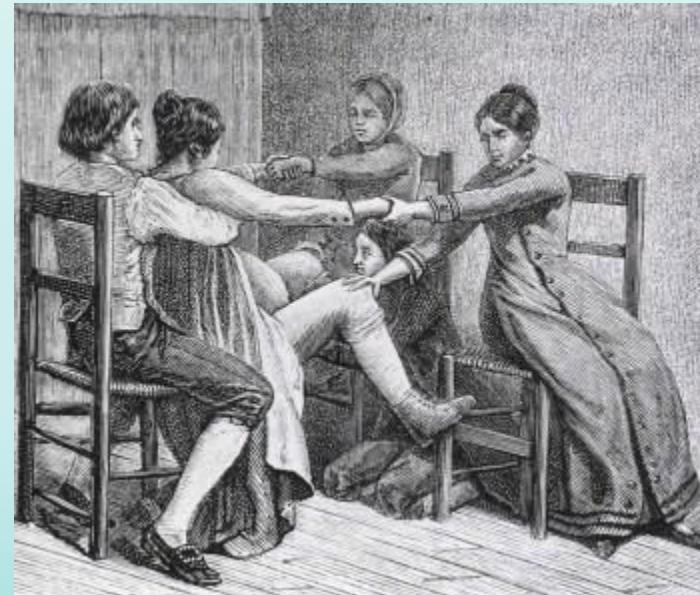
- **American Indian:** Indigenous people who settled in North America thousands years before Columbus arrived and settled in the territory that later became the 48 contiguous United States.
- Family units were based on lineages.
- **Lineages:** Form of kinship group in which descent is traced through either the father's or the mother's line.
 - **Patrilineage:** Descent is through father's line.
 - **Matrilineage:** Descent is through mother's line.
- Lineage and clan organization helped:
 - Strengthen social order.
 - Protect individuals against unfriendly outsiders.

European Colonists: Functionalist's perspective

- Western nations were dominated by smaller kinship groups.
- **Nuclear family:** Husband, wife, and children.
- **Extended family:** Nuclear family plus other relatives present in the household.
- Families performed public services.
- Were expected to provide education and vocational training to their children.
 - Parents and masters were required by law to teach reading to their children and young servants.

European Colonists: Functionalist's perspective

- Selected families functioned as:
 - Hospitals.
 - Houses of correction.
 - Orphanages.
 - Nursing homes.
 - Poorhouses.



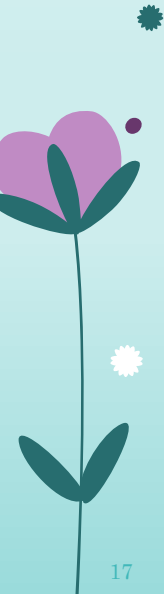
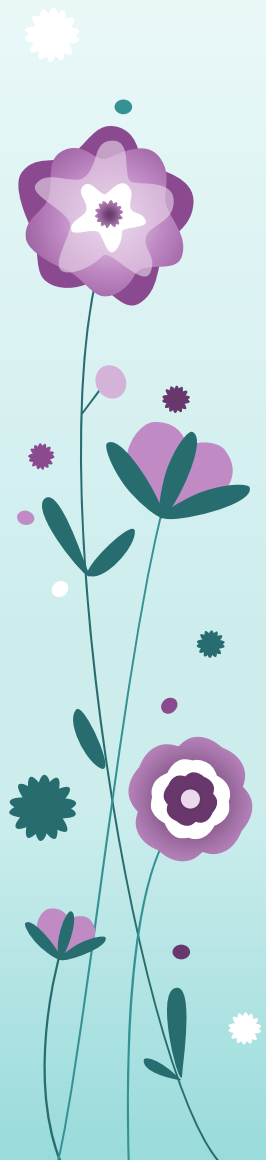
European Colonists: Problems

- No room for privacy or private lives.
- Family's affairs were considered public business.
- Houses were not designed for privacy.
- Nuclear family was considered an integral part of society.



Activity: Puritan's Law Regarding Family and Marriage

1. What is Puritan's law in general? Who was Puritan?
2. What is Puritan's law about courtship and marriage?
3. What is Puritan's law about adultery?
4. What is Puritan's law about parenting?



European Colonists: Problems

- Family diversity.
- Not all families fit the ideal of two married, biological parents and their children.
 - Children who lost a parent lived in stepfamilies after their remaining parent remarried.
- Marriage could be informal.
 - More common in the Middle and Southern Colonies.
 - Bigamy could occur if a man migrated to a faraway territory and began a new family.
- Churches established control over marriage in the nineteenth and early twentieth centuries.

Emergence of the Modern American Family: 1776 to 1900 ₁

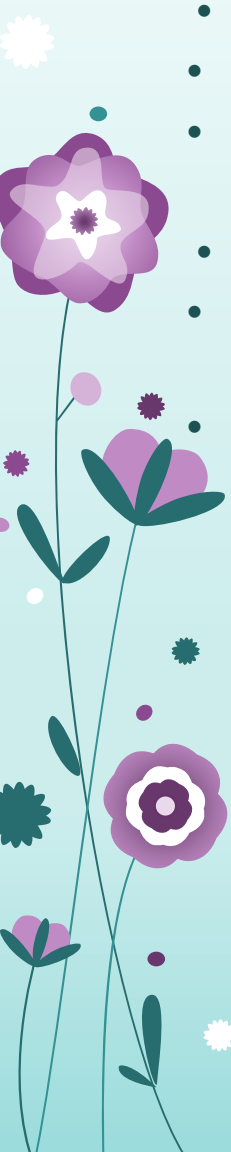
- New characteristics of families emerged.
- Marriage was based on mutual respect and affection.
- The wife.
 - Cared for children and maintained the home.
 - Was seen as morally superior.
- Attention and energy of the husband and wife were centered on their children.
- Number of children per family declined.

Emergence of the Modern American Family: 1776 to 1900 ₂

- Role of romantic love increased within marriage.
- Required careful judgment of whether a potential spouse was a reliable and dependable person.
 - Considerations were important for women as they became legally and socially bound to their husband's authority upon marrying.



From Cooperation to Separation: Men's and Women's Spheres ¹

- 
- Growth of commercial capitalism led husbands to take up paying jobs.
 - Authority of fathers was undermined by the opportunity to earn money outside the home.
 - Facilitated the growth of individualism.
 - Emergence of separate spheres.
 - Men's sphere: World outside the home.
 - World of work was governed by business ethic.
 - Women's sphere: Home, relatives, and children.
 - Considered a place where a woman could renew the husband's character and spirituality.

From Cooperation to Separation: Men's and Women's Spheres ₂

- The True Woman was:
- A pious upholder of spiritual values.
- Pure.
- Submissive to men.
- Domestic.

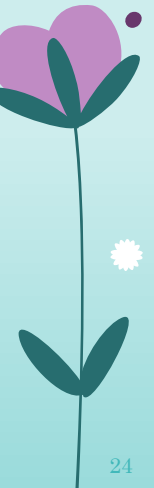
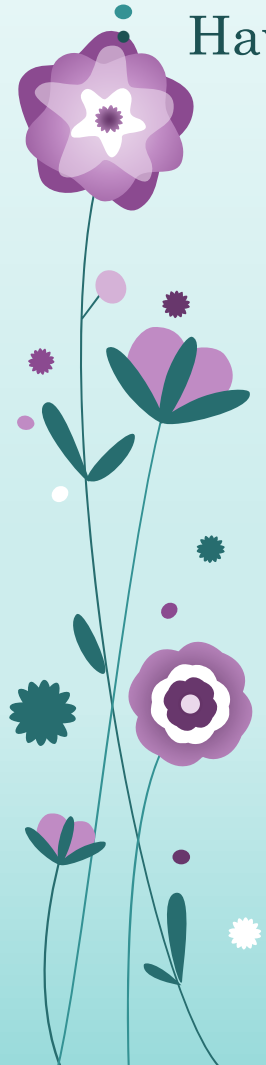


African American, Mexican American, and Asian Immigrant Families

- Africans were forced to immigrate.
- Captured or bought in West Africa and sold as slaves.
- Mexicans had pushed north in search of grazing lands.
- Asians came to work as laborers on railroads and other enterprises.

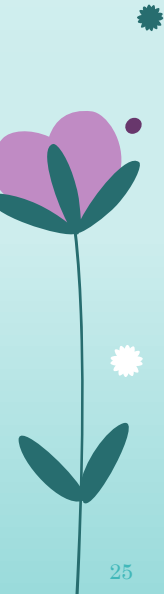
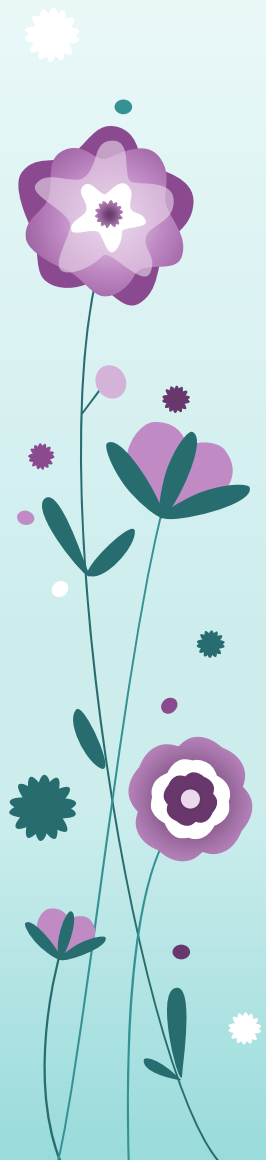
African American Families

- Historically, maintained stronger ties to extended kin.
- Have borne a higher percentage of children outside marriage.



Impact of Slavery ¹

- Losses imposed by slavery.
- Uprooting from Africa.
- Disruption of families through sales of family members to new owners.
- Inability of fathers to protect their families from the abuses imposed by masters.

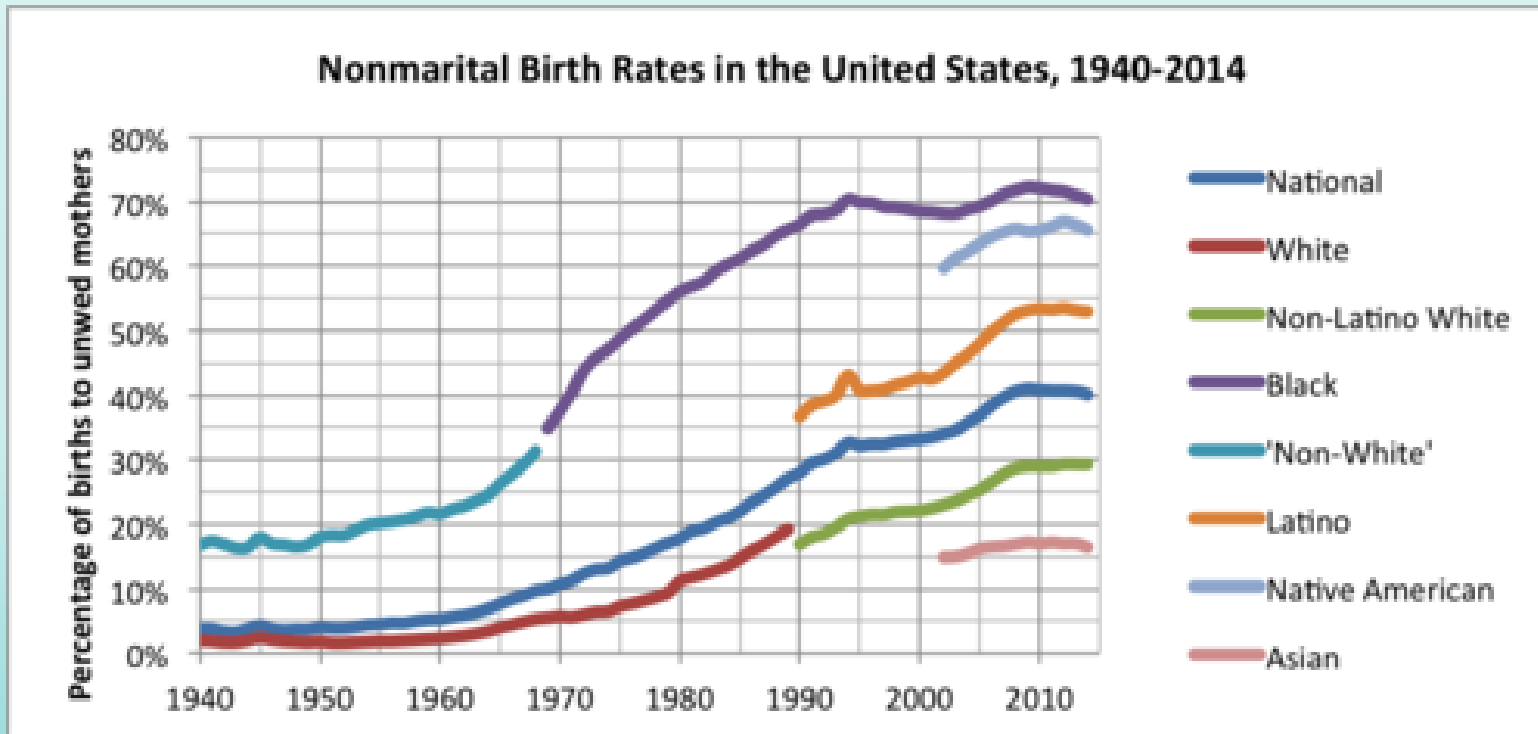


Video clip from the movie *Green Book*



Impact of Slavery ₂

- Most families included two parents.
- Black mothers were more likely to be living without a male partner than white mothers.
- Black women worked outside of home to support the family.
- Black men were offered low-paying, physically challenging jobs due to discrimination.

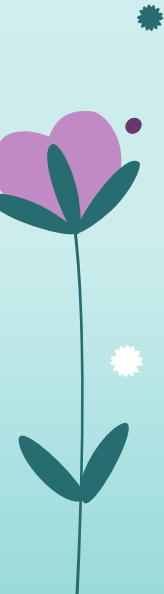
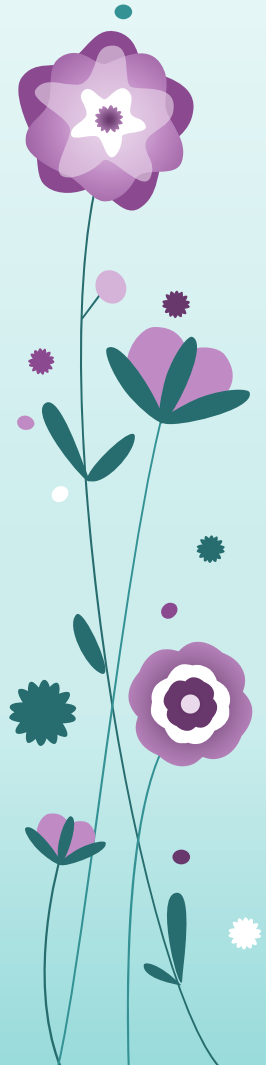


Mexican American Families

- In the 1830s and 1840s:
 - Social structure was disrupted by wars, revolts, and land grabs.
 - The United States acquired, by conquest, the current Southwest.
 - Mexicans became more of a working-class community.
 - Were forced into **barrios**, segregated Mexican American neighborhoods.
- From the mid-1960s, legal and unauthorized Mexican immigration began to occur on a large scale due to economic difficulties in Mexico.

Coming next...

- Discussion forum open today (courtship, sexuality and cohabitation)
- Discussion lead: post questions by midnight on Friday
- Respond and comments by noon next Wednesday (forum will be closed)
- Read Wiley 11 & 26, check-in next Tuesday



Simulation Prep

- You will randomly draw a role which you will play in the simulations. You will create a character based on the basic demographic information provided by the instructor. Below is a recommended list. You are strongly encouraged to fill other detailed information about your character, as much as possible.
- Keep in mind that you will "play" this character you build. You must be honest in playing this role as you will make a series of decisions based on this character. You can't change your character once this assignment is submitted.
- Write and submit a short essay (up to 200 words) describe your character. Briefly explain your design. Due by 11:59pm next Tuesday. (Feb 15th)
- The essay is worth 2 points.

Recommended List of information:

Name of the character

sexual orientation

Educational attainment

Occupation

Growing up with both parents or not

number of siblings

Parent's educational attainment

Hometown

Hobby

Asian Immigrant Families

- Majority of **Chinese immigrant** laborers were men (1850 CA gold rush)
- Few new families were formed.
- Laws prohibited Chinese immigrants from marrying white Americans or becoming citizens.
- Chinese Exclusion Act: Restricted immigration until after the Second World War.

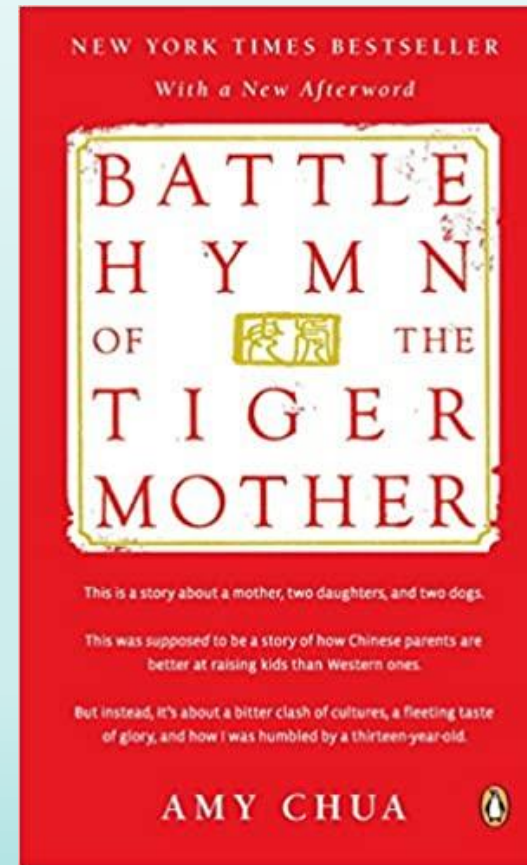


Asian Immigrant Families

- Family systems were different from those in the United States.
- Parents had authority over family members.
- Kinship was patrilineal.
- Children were expected to care for the elderly and live with them.
- Placed greater emphasis on family loyalty.

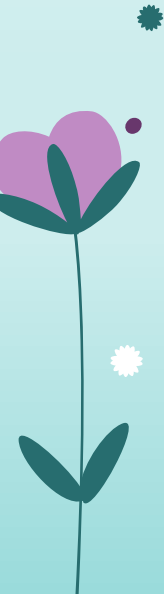
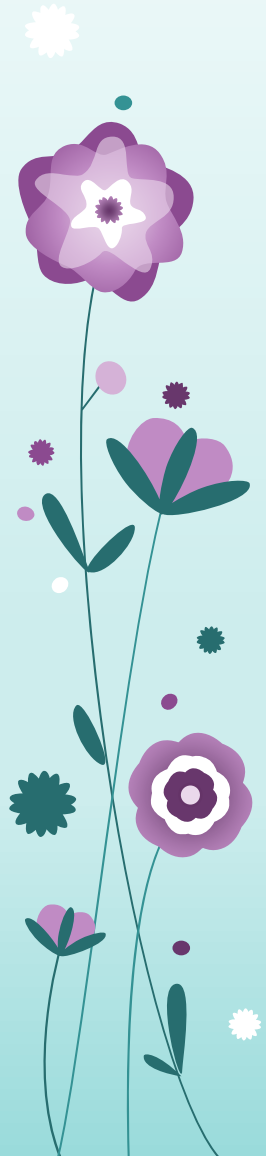
Discussion: Tiger Mother & Confucian Culture

- From Chua's book (chapter 1-4), do you see the characters of Asian immigrant families we talked about? What are those?
- How are these characters of Asian immigrant families relating to the Confucian East Asian family traits you read in the Wiley book? (page 7)



Outline

- Family histories in America
- **Changes and trend in America**
- **Families around the world**
- **International family change**



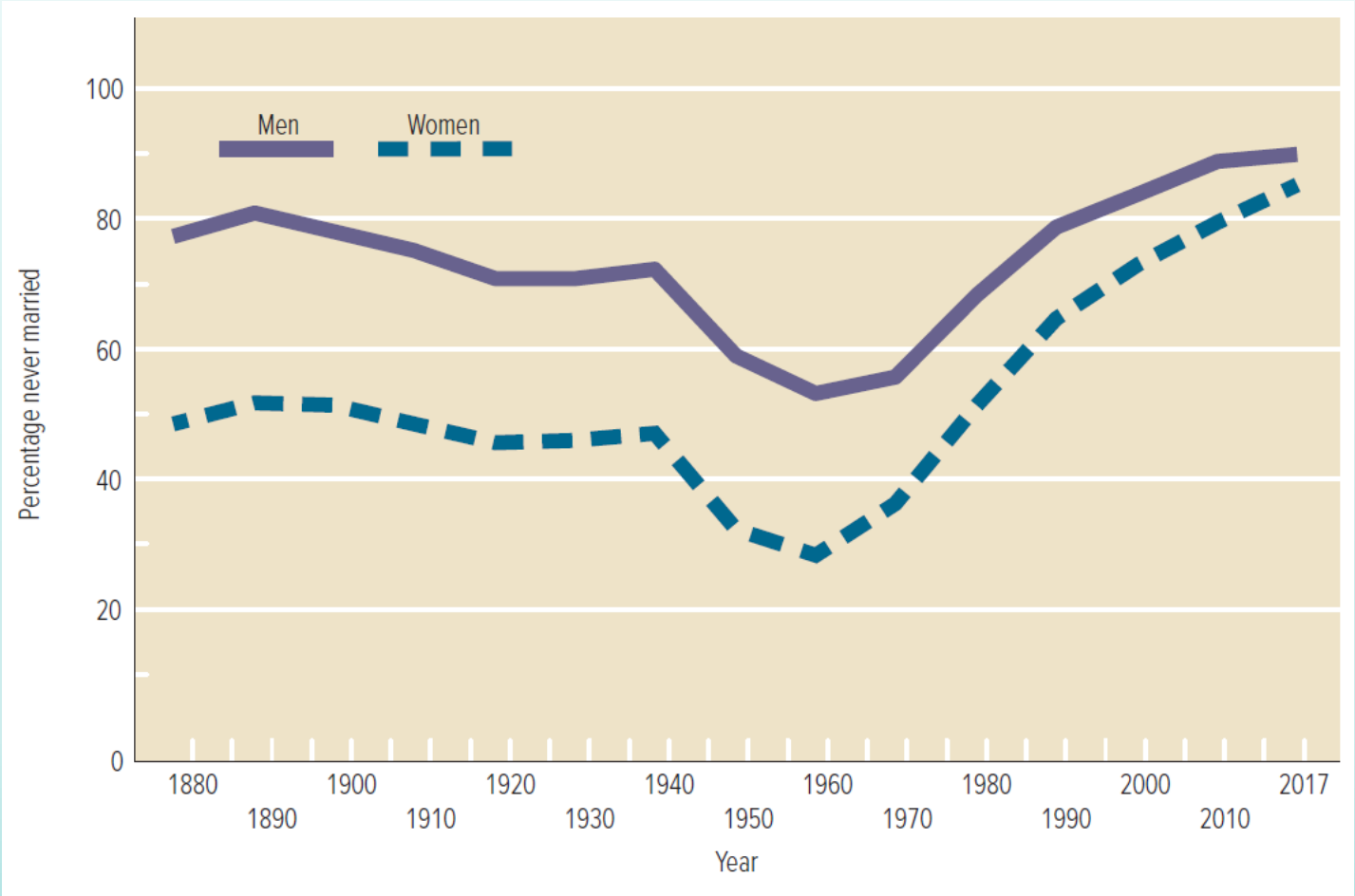
Rise of the Private Family: 1900-present (ask why?)

- Premarital sex
- Birthrate
- Divorce rate
- Cohabitation
- Same-sex marriage
- Men and women became more economically independent of each other.
- **How did the above relate to each other?**

Rise of the Private Family:1900-present

- Families became less dominant in people's lives.
- Marriage became:
 - Less necessary economically and materially.
 - More fragile.
- Privacy and private families increased.
- Adult life expectancy increased.
- Empty nest phase became common.
- More apartments were built for independent living.

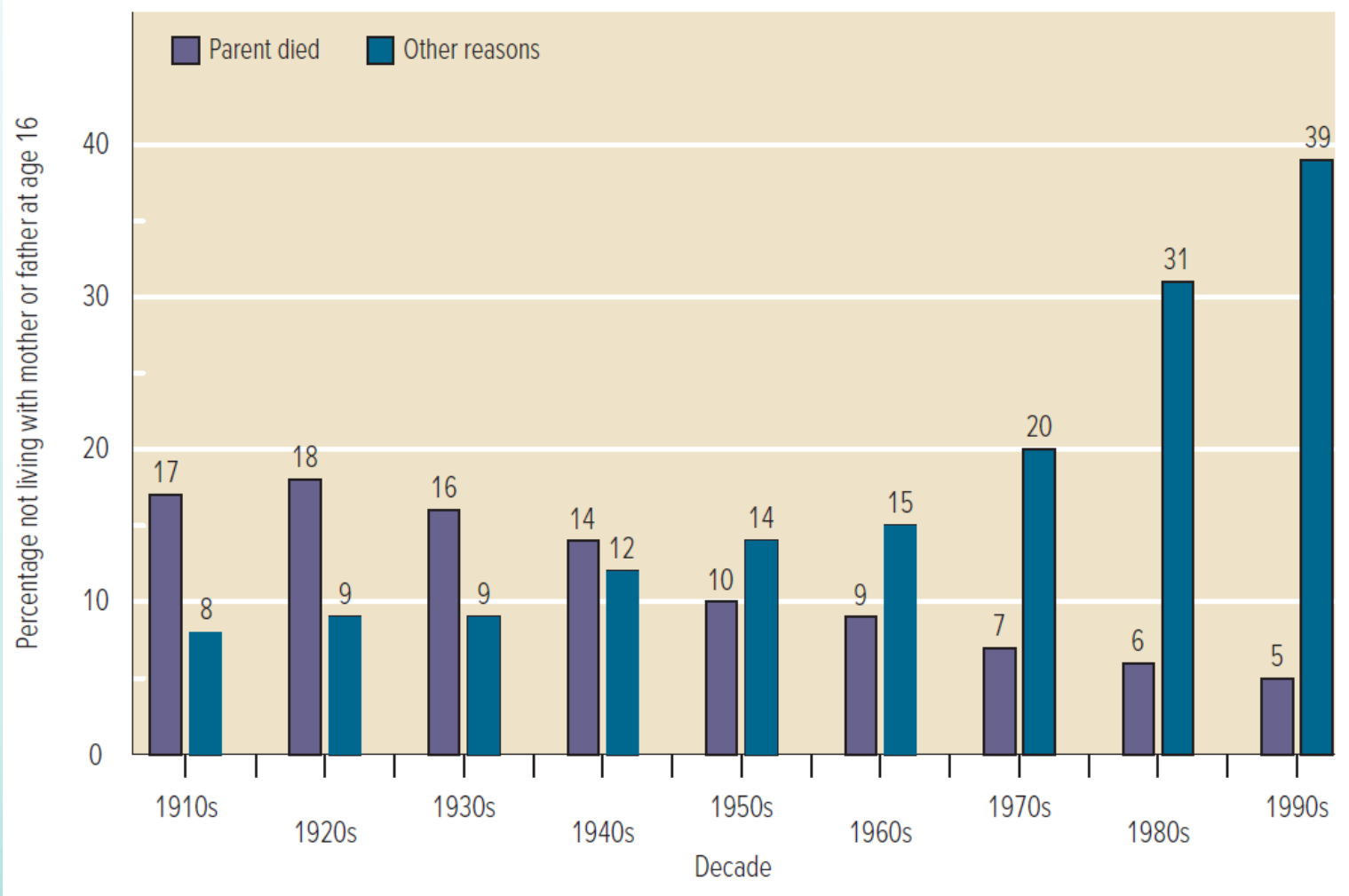
Figure 2.1: Percentage Never Married among Men and Women Aged 20 to 24, 1890 to 2017



Sources: for 1890 to 1990, Carter et al. (2006), for 2000 to 2017, U.S. Bureau of the Census (2018).

- [Access the text alternative for slide images](#)

Figure 2.2: Percentage of Children Not Living with Their Own Mother and Father at Age 16 Because a Parent Died or for Other Reasons, 1910s to 1990s

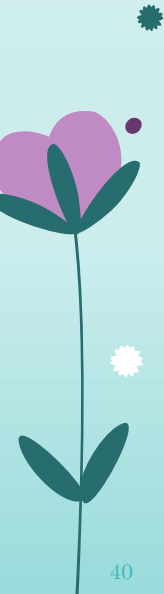
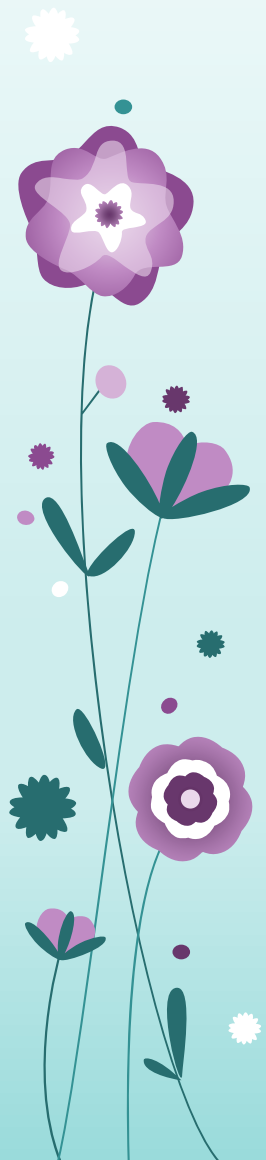


1.1.

• [Access the text alternative for slide images](#)

What History Tells Us ₁

- Americans come from various regions.
- Differ in family traditions.
- Have blended traditions to reduce differences.
- The change of women's role
- Individualism contribute to the rise of private family



International Family Change (read & discuss)

- What is “western way of life”? (marriage, family, children, etc.)
- Is “Western way of life” superior?
- What is the convergence theory? If there are hurdles to prevent the different family styles to converge, what are they?
- Do you think the family style around the world will differ or to converge? Explain your answer.

