



WARM UP: ABNORMAL

- Can you observe anything that depart from norm in the room today?

COMING NEXT.....

- Exam I this Wednesday in class
- 20 multiple choices / true false questions
- Covers intro, theories, methods, culture and socialization
- On Moodle, using lock down browser, bring your laptop and charging cord
- You have to be physically present in the classroom in order to take the exam
- It is a 45 minutes exam.
- If you need accommodation, you need to email me (Again!) and remind me.



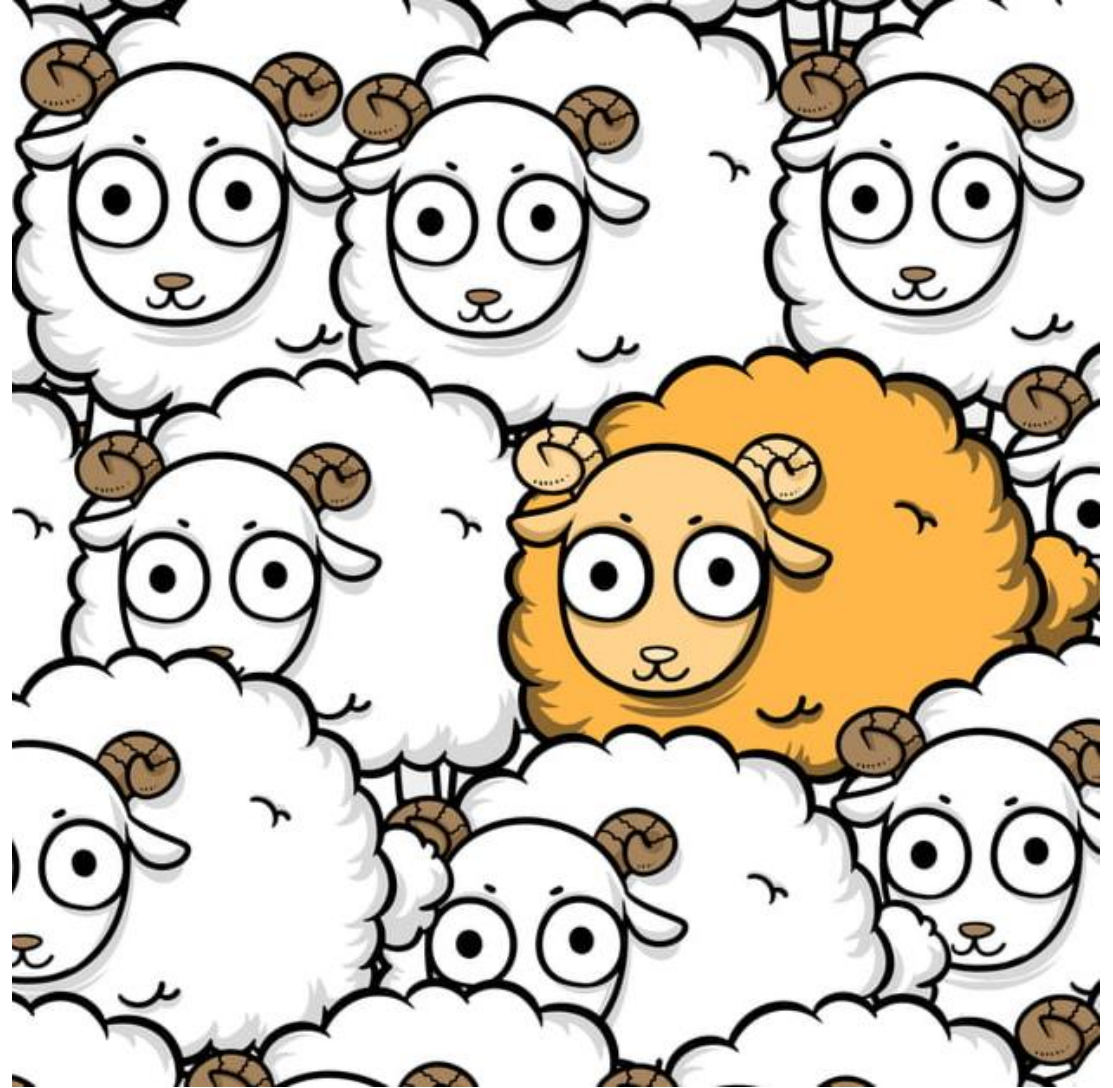
DEVIANCE

OUTLINE

- Define deviance
- Theories about deviance
- Study of Crime

DEFINING DEVIANCE

- **Deviance** is a behavior, trait, or belief that departs from a norm and generates a negative reaction in a particular group.
- Defining something as deviant requires us to examine the group norms and how the group reacts to the behavior.

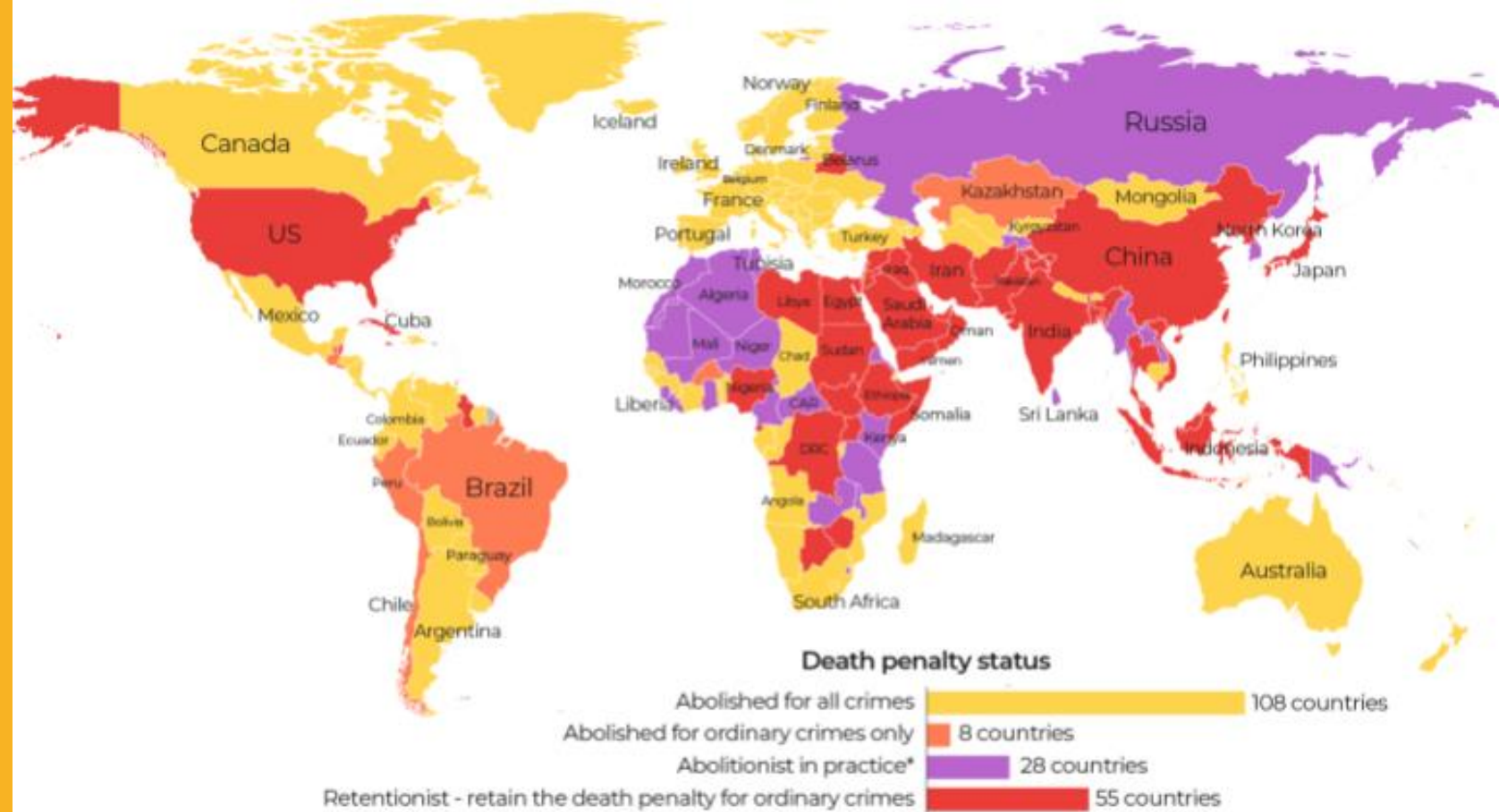


DEVIANCE ACROSS CULTURES

DEATH PENALTY

Which countries still have the death penalty?

More than two-thirds of the world has now abolished the death penalty **in law or practice** according to Amnesty International.



BRIEF TIMELINE OF CHINA'S POPULATION POLICY

1979: Government proposal encourages all couples to have just one child

1982: Family planning becomes basic state policy

2000: A couple can have a second child, if both of them are only children

2013: Couples allowed to have a second child if one of them is an only child

2015: End of one-child policy and all couples are allowed to have a second child

2021: All couples can have three children

DEVIANCE OVER TIME

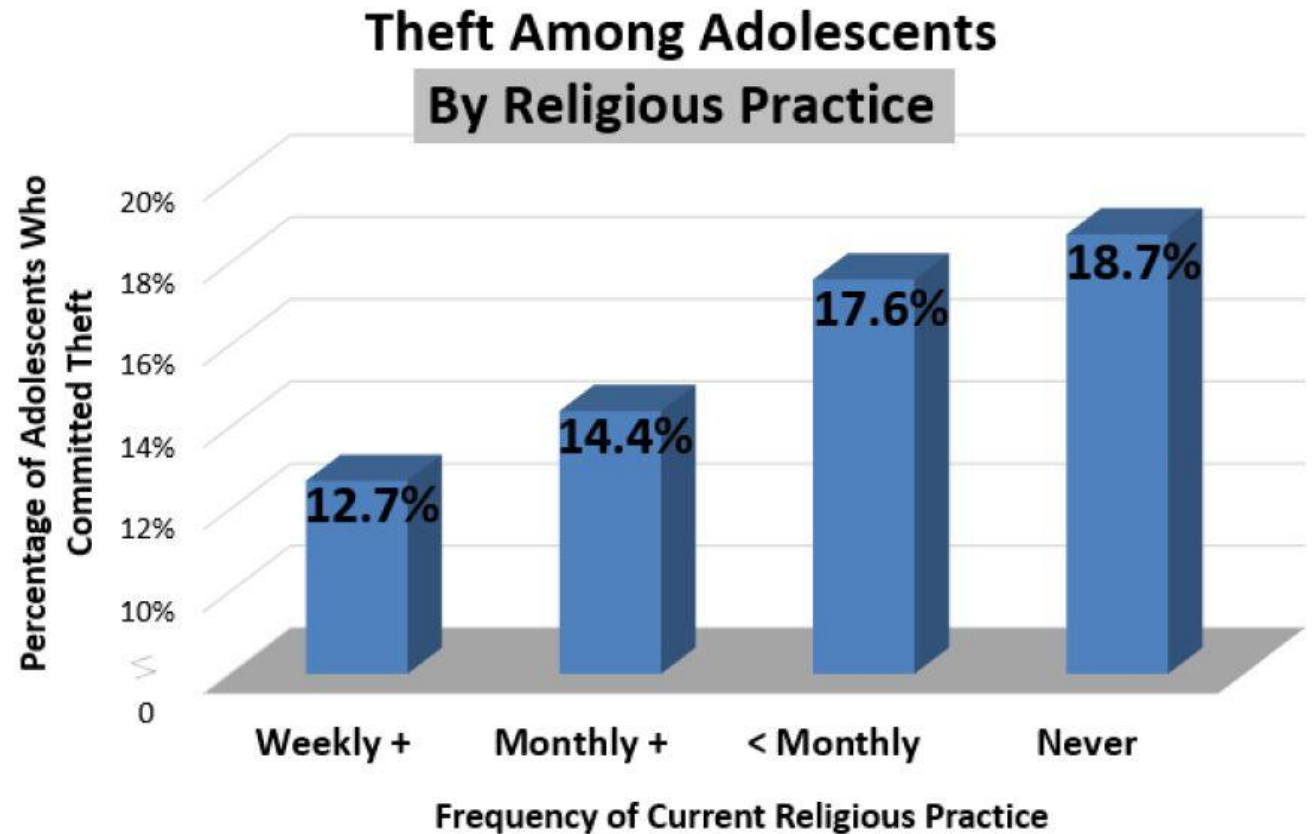
THEORIES OF DEVIANCE: FUNCTIONALISM

- Functionalism
 - Deviance serves a function in our society.
 - According to Émile Durkheim, deviance serves a positive social function by clarifying moral boundaries and promoting social cohesion.



FUNCTIONALISM: SOCIAL CONTROL THEORY

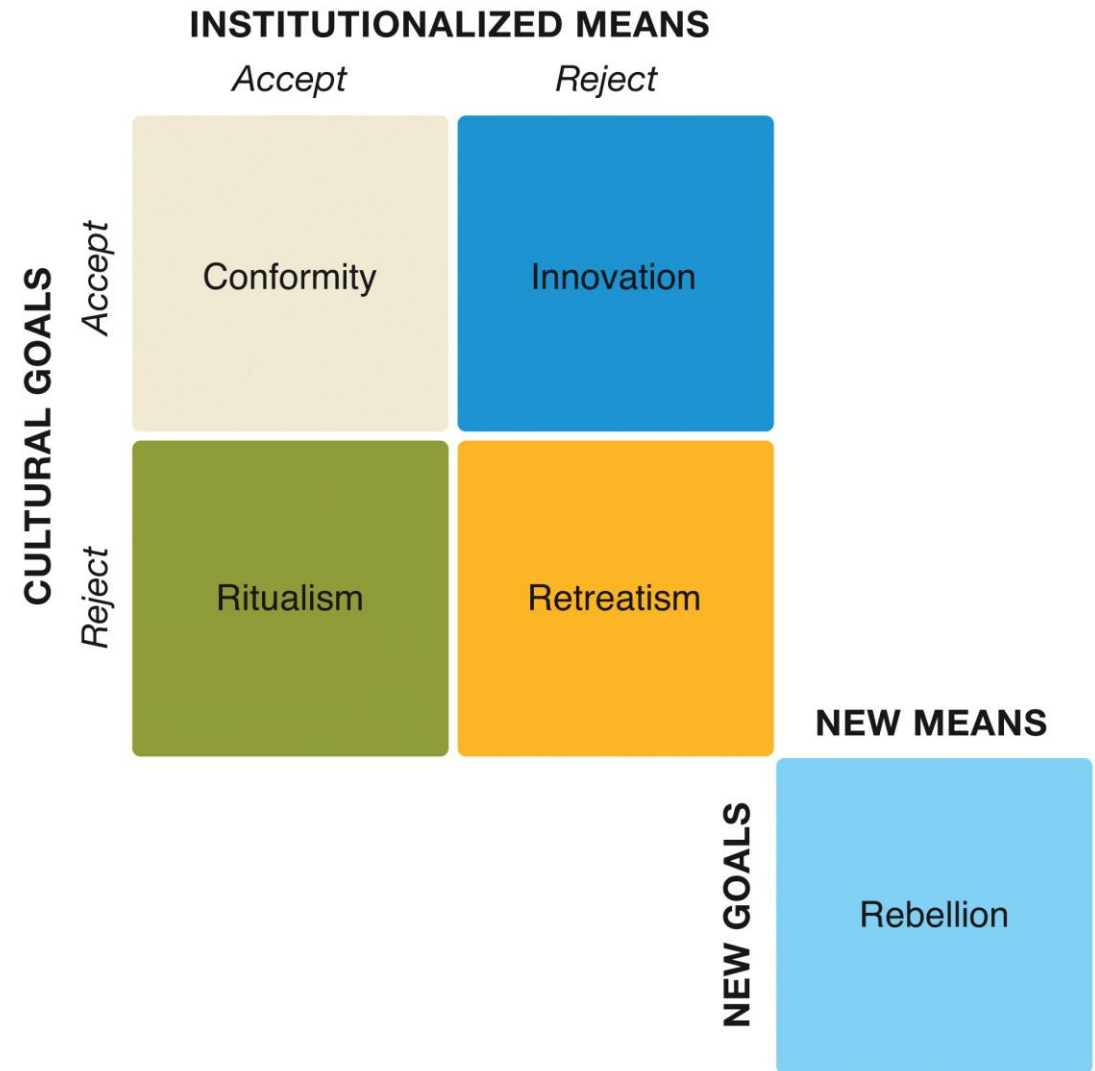
- Theory developed by Travis Hirschi to explain crime
- Strong social bonds
 - Increase conformity
 - Decrease deviance



Source: National Longitudinal Study of Adolescent Health, Adolescents Grades 7-12.

FUNCTIONALISM: STRUCTURAL STRAIN THEORY

- Structural strain theory
 - Developed by Robert Merton
 - argues that deviance occurs when a society does not give all its members equal ability to achieve socially acceptable goals.



STRAIN THEORY

- **Conformists** accept the goals of the society and the means of achieving those goals.



STRAIN THEORY

- **Innovators** accept the goals of the society, but they look for new, or innovative, ways of achieving those goals.



STRAIN THEORY

- **Ritualists** aren't interested in the goals of the society, but they do accept the means of achieving those goals.



Anthony-Masterson/Getty Images

STRAIN THEORY

- **Retreatists** don't accept the goals of the society or the means of achieving those goals.



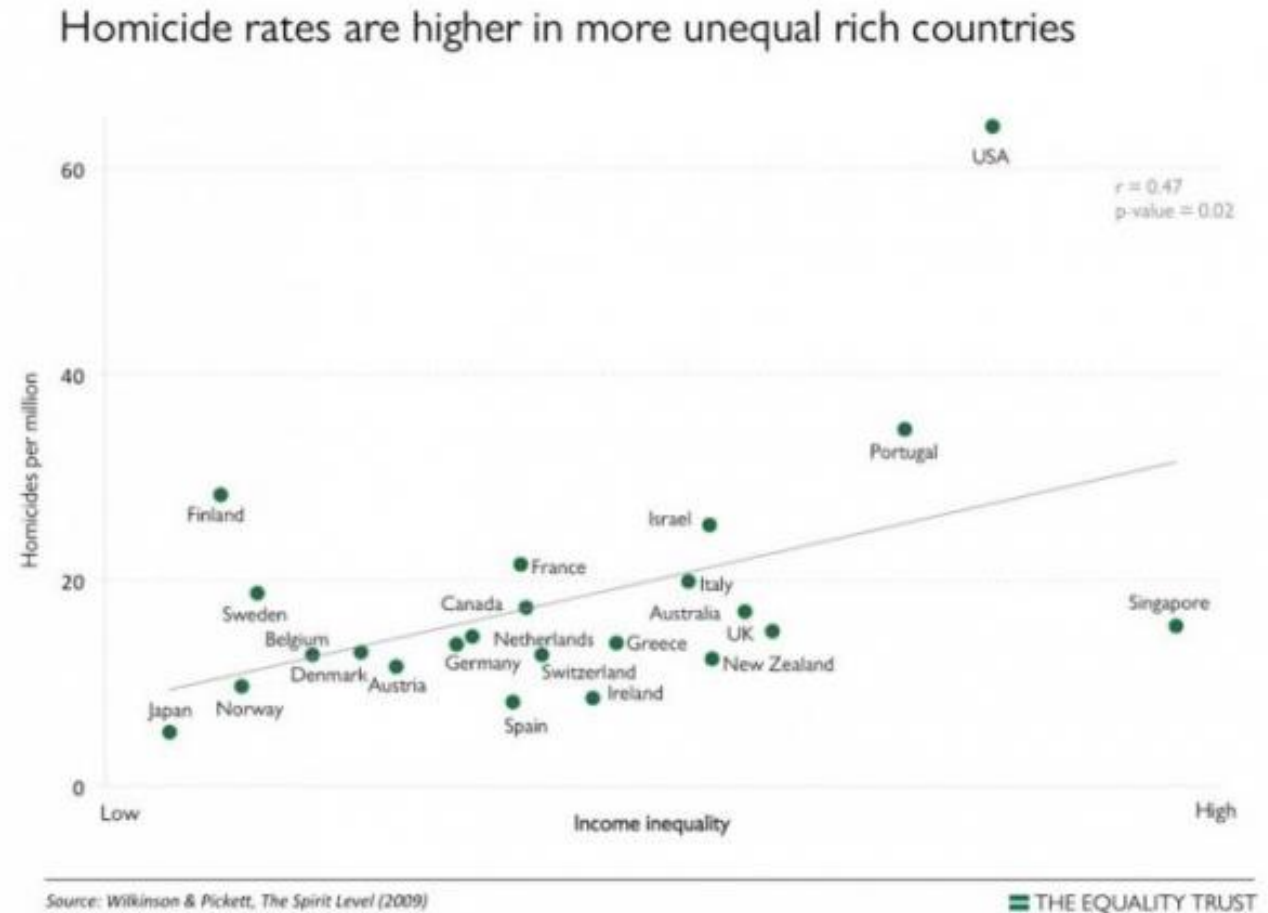
STRAIN THEORY

- **Rebels** don't accept the goals of the society or the means of achieving those goals, so they create their own goals using new means.



THEORIES OF DEVIANCE: CONFLICT THEORY

- Conflict theory
 - Deviance is a result of social conflict.
 - In order for the powerful to maintain their power, they marginalize and criminalize the people who threaten it.
 - Inequality is reproduced in the way in which deviance is defined.



THEORIES OF DEVIANCE: SYMBOLIC INTERACTIONISM

- Symbolic interactionism
 - Interpersonal relationships and everyday interactions influence meanings and understandings of deviance.



SYMBOLIC INTERACTIONISM: DIFFERENTIAL ASSOCIATION THEORY

- *Differential association theory*
 - A symbolic interactionist perspective developed by Edwin Sutherland
 - States that we learn deviance from interacting with deviant peers



SYMBOLIC INTERACTIONISM: LABELING THEORY

- *Labeling theory*
 - Labeling theory is a symbolic interactionist perspective developed by Howard Becker.
 - It states that deviance is caused by external judgments (labels) that change a person's self-concept and the way in which others respond to that person.
 - According to Becker, "labeling" can lead to a ***self-fulfilling prophecy***: a prediction that causes itself to come true.

STEREOTYPING

- Judging others based on preconceived generalizations about groups or categories of people.
- A product of socialization.
- It is wrong yet unavoidable.





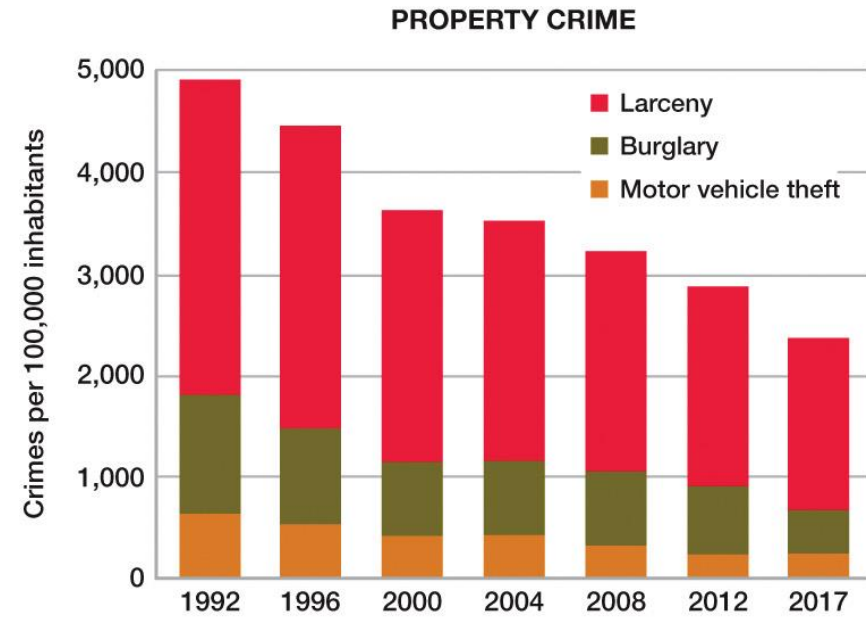
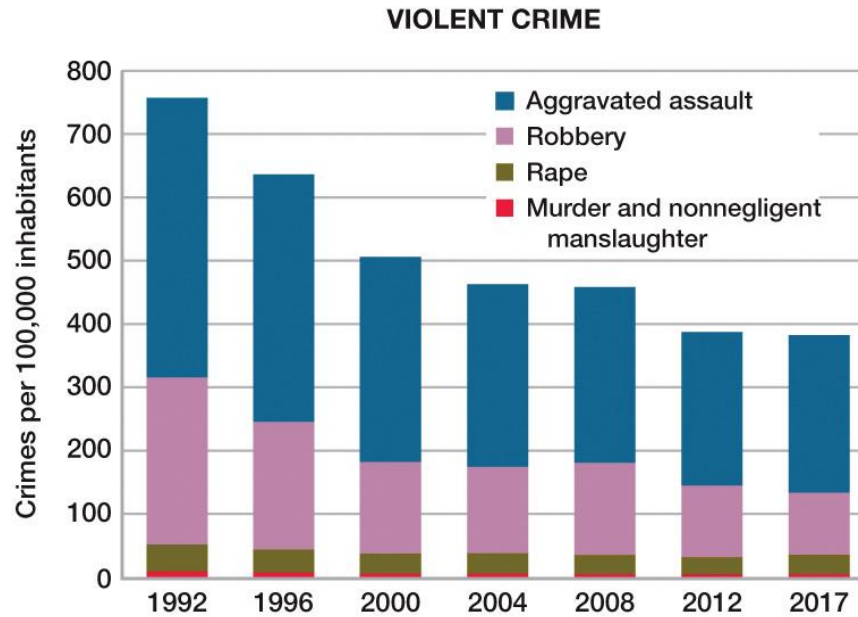
SYMBOLIC INTERACTIONISM: STEREOTYPE THREAT & STEREOTYPE PROMISE

**DISCUSSION:
CAN
STEREOTYPE
PROMISE BE
HARMFUL?**

A MATH QUESTION



ASK AN ASIAN



SOURCE: Federal Bureau of Investigation 2018a.

THE STUDY OF CRIME

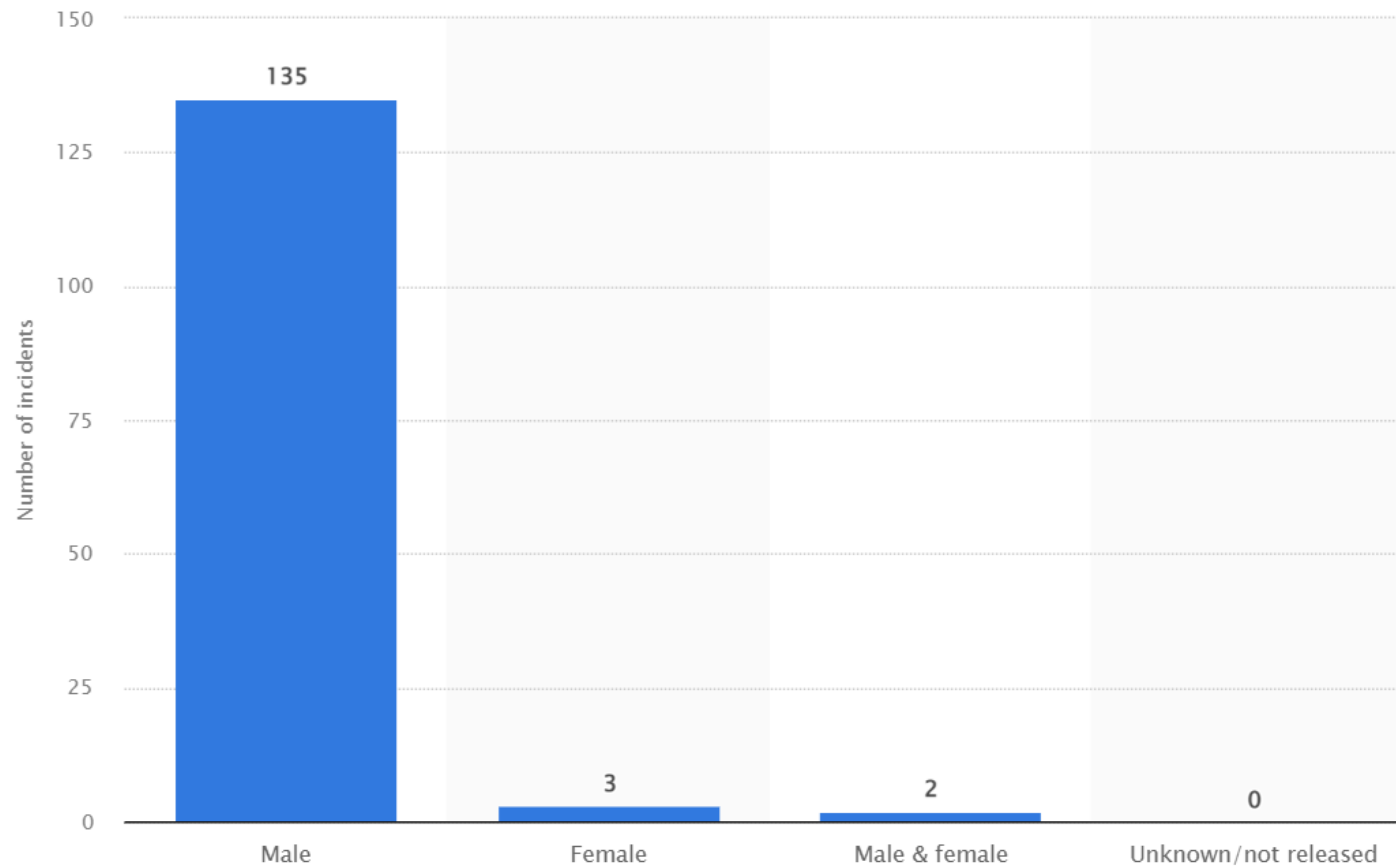
**Crime is the violation of a norm
that has been codified into law.**

CRIME AND DEMOGRAPHICS

- Gender
- Race
- Class



Carlos Chavarria/The New York Times/Redux



[Additional Information](#)

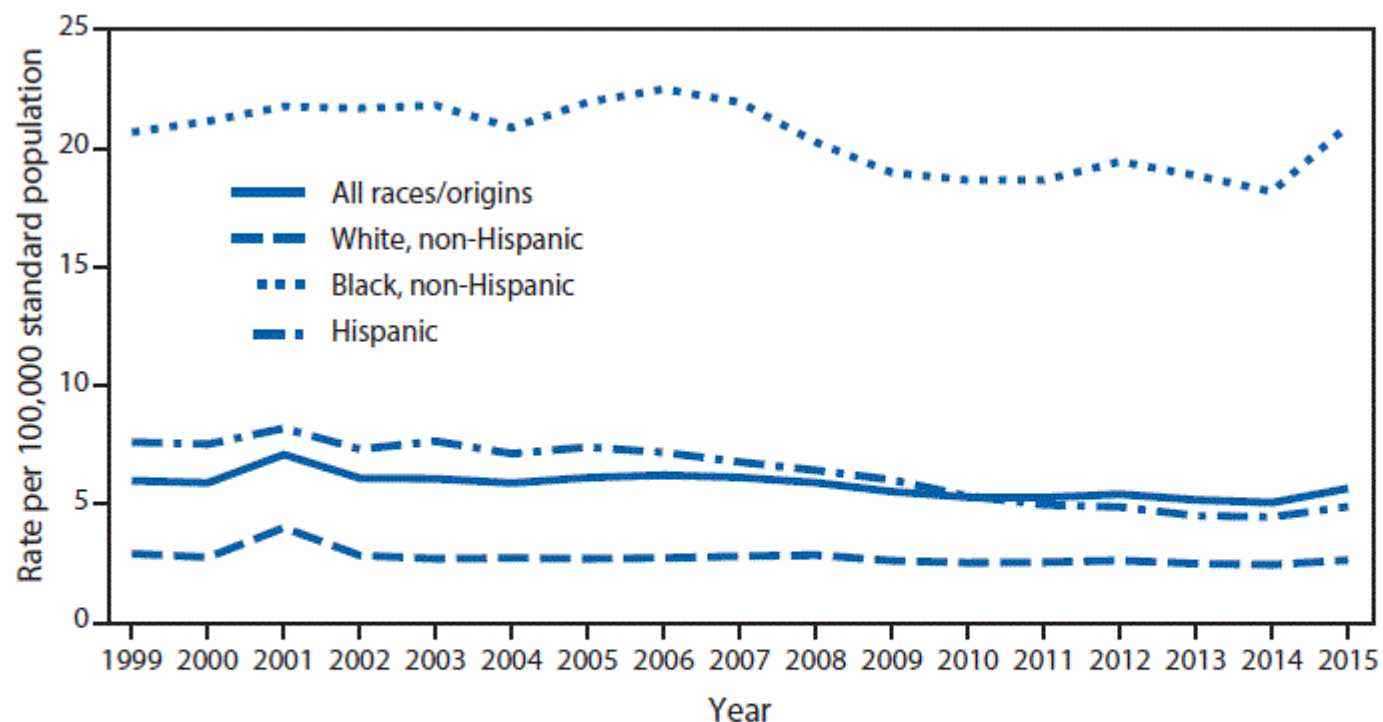
© Statista 2023

[Show source](#)

NUMBER OF MASS SHOOTINGS IN THE UNITED STATES BETWEEN 1982 AND FEBRUARY 2023, BY SHOOTER'S GENDER

[Mass shootings in the U.S.: shooters by gender 2023 | Statista](#)

Quick Stats: Age-Adjusted Rates for Homicides,* by Race/Ethnicity†— United States, 1999–2015



* Deaths from homicide were identified using the *International Classification of Diseases, Tenth Revision* underlying cause of death codes *U01–*U02,X85–Y09,Y87.1.

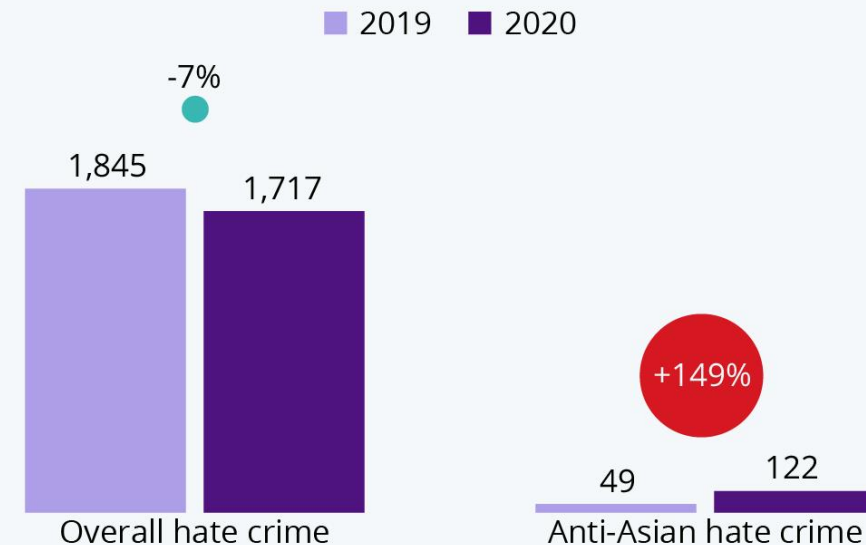
† Of the persons who died as a result of the homicide.

CRIME AND DEMOGRAPHICS: HATE CRIMES

- Hate crimes
 - These crimes occur when criminals specifically target victims based on demographic characteristics.
 - Being charged with a hate crime typically increases the punishment associated with any other crime, such as assault.
 - Official statistics probably underreport the true number of hate crimes.

Anti-Asian Hate Crime in U.S. Rises During Pandemic Year

Overall and anti-Asian hate crime reported to police in America's 15 largest cities in 2019 and 2020



Overall hate crime totals exclude Cleveland

Source: Center for the Study of Hate and Extremism (California State University)



statista

HOMEWORK REVIEW

Chapter 1

No harm can come to participants as a result of completing a questionnaire.

True

False

Chapter 1

Symbolic interactionism analyzes social phenomena at the macro level, while structural functionalism and conflict theory analyses are at the micro level.

True

False

Chapter 4

According to sociologists, our genetic makeup determines what kind of personality and character traits we develop in life.

True

False

Chapter 4

Agents of socialization are mutually exclusive and do not overlap.

True

False

Chapter 4

The media is the single most important agent of socialization for all people.

True

False